

A REQUEST FOR PROPOSAL FOR PROFESSIONAL SERVICES CONTRACT

Department of Highways
Professional Services Procurement Bulletin 2026-02
Fayette | 7-80305 | CS-3016

This document constitutes a Request for Proposals for a Professional Service Contract from qualified individuals and organizations to furnish those services as described herein for the Commonwealth of Kentucky, Department of Highways.

I. PROJECT DESCRIPTION

County - Fayette
Route - CS-3016 (Alumni Drive)
Item No. - 7-80305.00
Project Description - Address congestion from Edgewater Drive to Man O' War Boulevard

II. PROJECT INFORMATION

Project Manager - Casey Smith, P.E.
District 7 Liaison - Stephen De Witte, P.E.
User Division - Planning
Approximate Fee - \$250,000 Scoping Study (Lump Sum)
Project Funding - Federal Statewide Planning & Research (SPR) Funds
Project Length - Approximately 0.972 miles

III. PURPOSE AND NEED

The objective of this study is to identify concepts to improve capacity and safe mobility for multiple road users utilizing Complete Streets and Safe Systems approaches.

This portion of Alumni Drive between Edgewater Drive to Man o War Boulevard has a high volume of traffic generated from daily commuters connecting from New Circle Road (KY 4) to I-75 southbound via Man o War Boulevard and Richmond Road. Concerns with collision numbers and severity amongst both vehicular and vulnerable road users creates the need to safely and efficiently accommodate all users on this segment of Alumni Drive.

IV. DBE GOAL

The Consultant team shall include a DBE Participation Plan with their Response to Announcement to help the Department meet the 11.95% DBE goal established by FHWA. The plan should demonstrate how DBE companies will be mentored or used to assist in the area(s) pertaining to this contract. An additional page will be allowed in the Project Approach (Section 7) to exhibit this plan. A maximum of five (5) points will be considered in the Evaluation Factors for

the DBE Participation Plan.

V. SCOPE OF WORK

The scoping study will likely include, but not be limited to:

- Collecting, summarizing, and verifying existing roadway data
- Gathering and analyzing crash data utilizing methodologies outlined in the Highway Safety Manual (HSM), KTC research, and KYTC's Data Driven Safety Analysis (DDSA) Implementation Plan
- Coordinating with Lexington-Fayette Urban County Government (LFUCG) and the Lexington Area Metropolitan Planning Organization (MPO)
- Identifying needs of the users of the corridor and develop potential improvement options utilizing [KYTC's Complete Streets, Roads, and Highways Manual](#) and [Policy](#), as well as [TSMO solutions](#).
- Analysis of safety and traffic for existing and future conditions (how does this section fit within the wider context of travel within Lexington) for all users
- Developing a list of prioritized segments and projects
- Developing planning-level cost estimates for all phases (Design, Right-of-Way, Utilities, and Construction) and conducting planning-level benefit-cost analysis of the identified and identifying sources of risk. All risks (including time-based risk) should be accounted for in any cost estimate.
- [Conducting Stage 1 screening under the KYTC Intersection Control Evaluation \(ICE\) Guidance](#) when examining potential intersection or interchange terminal changes.
- Submitting a summary of findings in a Final Report.

This project may be advanced to Preliminary Engineering upon completion of the Initial Planning Study with a Contract Modification. The project may then be advanced to Final Design upon the completion of Preliminary Engineering and Environmental Analysis with a Contract Modification. The selected Consultant will then be required to provide engineering services to perform Final Roadway and possibly Structural Design, including the preparation of any design studies, drainage design, right-of-way plans, construction plans, traffic control plans, and cost estimates as well as any other services that KYTC chooses not to perform with in-house forces.

VI. SPECIAL INSTRUCTIONS

The Department may retain any of the advertised services to be performed by in-house state forces.

Instructions for Response to Announcement can be found at:

<https://transportation.ky.gov/ProfessionalServices/Pages/Respond-to-an-Announcement.aspx>

VII. AVAILABLE STUDIES

[Lexington Area Congestion Management Bottleneck Study](#) (2021)

The Lexington MPO completed a bottleneck study that makes specific recommendations to corridors and intersections that will help relieve traffic congestion. Several project recommendations are along this section of Alumni Drive including the intersection with Man o War

Boulevard.

[Lexington-Fayette Safety Action Plan](#) (2023)

LFUCG and the LAMPO, in coordination with KYTC District Office and Central Office HSIP, completed a safety action plan as part of the effort to change the way streets and roads are designed, developed, and maintained. This report includes an analysis of the existing safety conditions and historical trends and explores systemic needs. A portion of the study corridor have been identified in the Prioritized Corridor Projects List.

[Lexington Area Bicycle & Pedestrian Master Plan](#) (2018)

Bicycle and pedestrian master plan for the Lexington Area MPO to create a new vision for walking and biking in the region. This study is on a corridor that was identified as a key project from Tates Creek to Squires Trail.

VIII. METHOD OF DESIGN

The selected Consultant shall utilize the most recent CADD Standards for Highway Plans Policy in the development of the highway plans. Refer to the 2022 CADD Standards for ORD V4.4 Project Development Memo for information pertaining to the latest CADD Standards and plan submittal.

IX. ENVIRONMENTAL SERVICES

Any necessary Environmental Services are likely expected to be provided by the Consultant. If needed, an Environmental Overview Report with a red flag summary may be required in the final report. Environmental services necessary for completion of Preliminary Engineering or Final Design may be added by contract modification at the appropriate time. At any time, if the Department has the capacity to provide these services, the Department may retain the advertised environmental services. Prequalification in Environmental Services is not required to be identified in the Consultant's Response to Announcement.

X. PHOTOGRAMMETRIC SERVICES

The Consultant will provide mapping and will furnish manuscripts in ORD format. Statewide Elevation data and Aerial photography can be found at the following link [KyFromAbove - Kentucky's Aerial Photography & Elevation Data Program](#). The selected Consultant may supplement this information with conventional surveying as determined during project scoping.

XI. STRUCTURE DESIGN

Structure Design is not anticipated for the Planning Study; however, structures present on the corridor will require analysis. When the project advances to Preliminary Engineering/Final Design and if the selected Consultant is retained for Final Design services, the selected Consultant shall do the necessary engineering services to submit to the KYTC an Advanced Situation Folder(s) for the appropriate structure(s). The selected Consultant may be responsible for any necessary Structure Design services. Structure Design of the proposed structure(s) may be added as a Contract Modification. Prequalification in the area of Structure Design is required to be identified in the Consultant's Response to Announcement.

XII. GEOTECHNICAL SERVICES

The selected Consultant may provide all Geotechnical Services required for the project. A future Preliminary Design contract may include preliminary geotechnical services to review available geological, mining, or other geotechnical information that could influence the selection of the preferred alternate. Geotechnical services necessary for the completion of Final Design may be added by contract modification at the appropriate time. At any time, if the Department has the capacity to provide these services, the Department may retain the advertised geotechnical services. Prequalification in Geotechnical Services is not required to be identified in the Consultant's Response to Announcement.

XIII. TRAFFIC ENGINEERING

The selected Consultant will provide the analysis of the existing and proposed operations. Traffic Signal Design and Lighting Design services, if necessary for the completion of Final Design, may be added by Contract Modification at the appropriate time. At any time, if the Department has the capacity to provide these services, the Department may retain the advertised traffic services.

XIV. UTILITIES

The selected Consultant will identify existing utility facilities within the project area and complete or contribute to a utility conflict matrix, documenting those that may be negatively impacted by the project. The Consultant shall document the following for each utility in the conflict matrix: type of utility, owner of utility, quantify the extent they may be impacted, potential impacts to project budget, potential impact to project schedule, confidence of utility location depicted, and recommendations for remedy.

XV. PREQUALIFICATION REQUIREMENTS

To respond to this project the Consultant must be prequalified in the following areas by the response due date of this advertisement:

ROADWAY DESIGN

- Rural Roadway Design
- Urban Roadway Design
- *Advanced Traffic Engineering Design & Modeling* (see note below)*
- *Surveying* (see note below)*

STRUCTURE DESIGN

- Spans Under 500 Feet

TRAFFIC ENGINEERING

- Traffic Engineering
- *Electrical Engineering Traffic Signals* (see note below)*
- *Electrical Engineering Roadway Lighting* (see note below)*

TRANSPORTATION PLANNING

- Traffic Forecasting
- Traffic Data Collection
- Pedestrian & Bicycle Planning & Design

- Transportation Planning Engineering
- Travel Demand & Simulation Modeling
- Conceptual Transportation Planning
- *Advanced Transportation Planning Engineering** (see note below)

[Environmental & UST Services](#)* (see note below)

- *UST & Hazmat Preliminary Site Assessment (Phase 1)**

[Environmental Aquatic & Terrestrial Ecosystems Analysis](#)* (see note below)

- *Fisheries**
- *Botany**
- *Terrestrial Zoology**
- *Wetlands**
- *Freshwater Macroinvertebrates**
- *Water Quality**

[Environmental Archaeology & Other Services](#)* (see note below)

- *Air Quality Analysis**
- *Prehistoric Archaeology**
- *Socio-Economic Analysis**
- *Highway Noise Analysis**
- *Historic Archaeology**
- *Environmental Document Writing & Coordination**
- *Cultural-Historic Analysis**
- *Stream & Wetland Mitigation**

[Geotechnical Services](#)* (see note below)

- *Geotechnical Engineering**

* Note – These prequalifications are not required with the initial proposal as it is uncertain to the extent practicable if they are necessary. Should these services become necessary during the delivery of the project in this or future phases, the selected Consultant team must obtain the required qualifications before providing those services or bring on a prequalified subconsultant at that time.

XVI. PROCUREMENT SCHEDULE

Dates other than Response Date are tentative and provided for information only.

- | | |
|----------------------------|--|
| • Advertisement Date: | August 12, 2025 |
| • Response Date: | September 3, 2025 by 4:30 PM ET (Frankfort Time) |
| • First Selection Meeting: | September 8, 2025 |
| • Final Selection: | September 24, 2025 |
| • Pre-Design Conference: | October 1, 2025 |
| • Consultant Fee Proposal: | October 10, 2025 |
| • Contract Negotiations: | October 22, 2025 |
| • Notice to Proceed: | November 12, 2025 |

XVII. PROJECT SCHEDULE

- | | |
|---|---------------|
| • First Project Team Meeting: | February 2026 |
| • First Local Officials/Stakeholder Meeting: | March 2026 |
| • Second Project Team Meeting: | July 2026 |
| • Second Local Officials/Stakeholder Meeting: | August 2026 |
| • Final Project Team Meeting: | October 2026 |
| • Draft Report Submittal: | November 2026 |
| • Final Report Submittal: | January 2027 |

XVIII. EVALUATION FACTORS

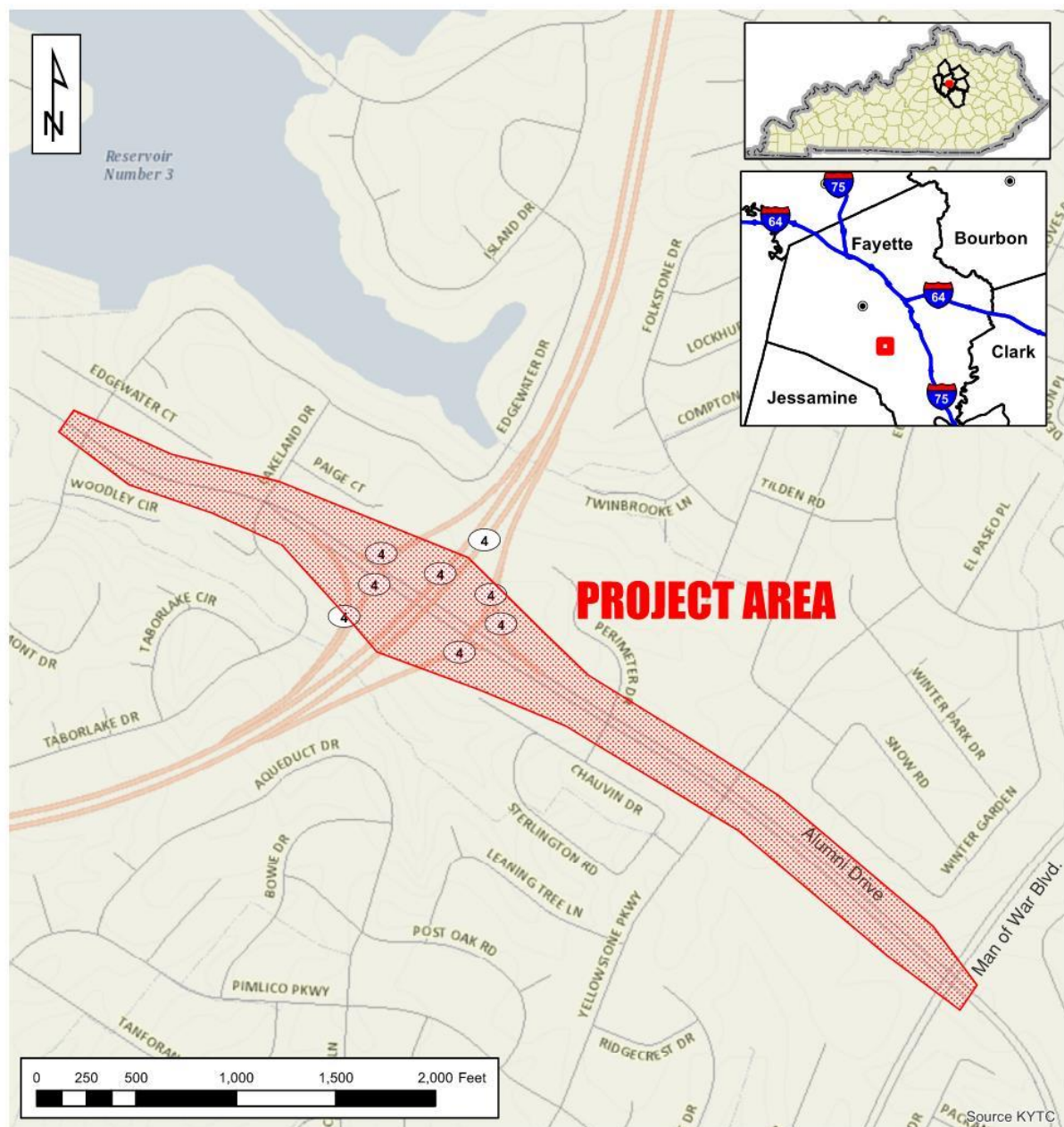
Consultants will be evaluated by the selection committee based on the following weighted factors:

1. Project approach and proposed procedures to accomplish the services for the project. (20 Points)
2. Relative experience of consultant personnel assigned to project team with highway project for KYTC and/or federal, local or other state governmental agencies. (15 Points)
3. Past record of performance on projects similar in type and complexity. (15 Points)
4. Capacity to comply with project schedule. (10 Points)
5. The Consultant demonstrates a comprehensive understanding of safety strategies and offers practical, impactful ideas to measurably improve both the immediate and long-term safety of the completed facility. (10 Points)
6. DBE Participation Plan. (5 Points)
7. Knowledge of the locality and familiarity of the general geographic area. (2 Points)

XIX. SELECTION COMMITTEE MEMBERS

1. Casey Smith, P.E., User Division
2. Stephen De Witte, P.E., User Division
3. Zachary Neihof, P.E., Secretary's Pool
4. Amanda Desmond, P.E., Secretary's Pool
5. Brian Wood, P.E., Governor's Pool

XX. AREA MAP



Fayette County
Item No. 7-80305
Alumni Drive

Disclaimer: KYTC provides this map as a reference only. Users are to validate information independently.
Copyright: 2025 Kentucky Transportation Cabinet. All rights reserved.

Date: 7/22/2025